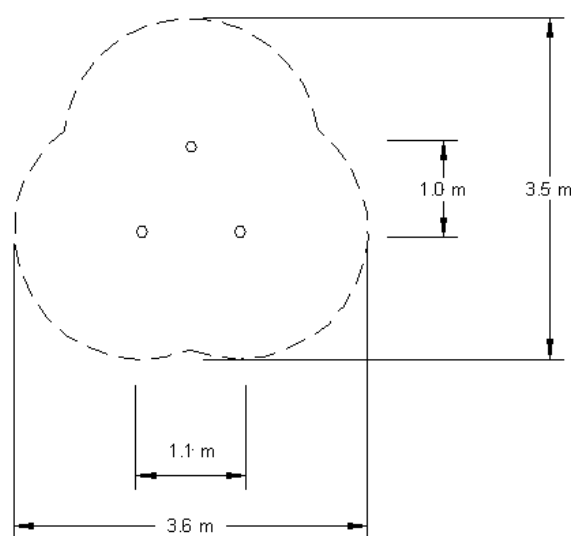
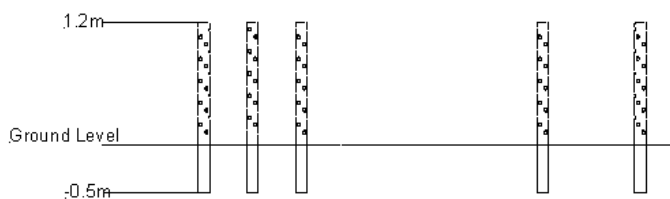


# Weave Poles (Configuration 3)



- Loosefill Area
- Suggested Hardstanding
- Free Space
- Unit Spacing Boundary

<b>Technical Information</b>	
<b>Equipment Dimensions</b>	
Length / Width / Height	1.0m x 1.1m x 1.2m
<b>Surfacing and Area Required</b>	
Minimum Space Required L/W/H	3.5m x 3.6m x 2.8m
Max Gradient Of Ground	1 in 30
Free Height Of Fall	n/a
Hardstanding	n/a
<b>Installation Information</b>	
Overall Weight	48kg
Heaviest Part	15kg
Largest Part	1.8m x 0.1m
Longest Part	1.8m
Concrete Required	0.19m <sup>3</sup>

**Note:** To avoid the risk of injury Playdale would recommend the removal of the rope(s) from the play area when the unit is left unsupervised and stored out of reach of children.